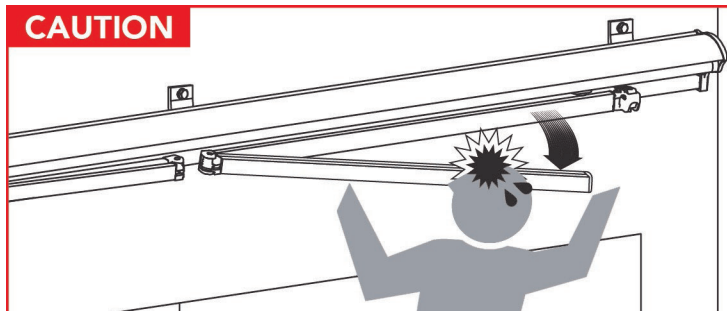


Retractable Awning Expansion Bolt Installation Instruction

ADVANING



The awning arms contain tensioned cables. Always use caution, securely tie the awnings arms to the awning when performing installation, adjustments, or repairs. Sudden movement of tension arms can result in serious personal injury, product and/or property damage.

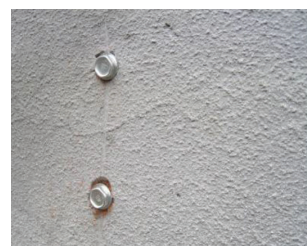
- 1 Use a ½" masonry drill bit to make a hole with a depth that matches the bolt and anchor's length.

***Note:** Make sure you are drilling into a solid masonry installation point.



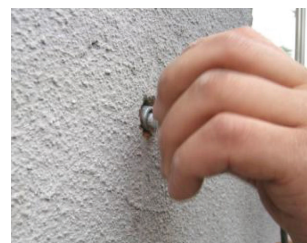
- 2 Insert the masonry anchor (expansion bolt) into the drilled hole and use a mallet to properly seat it.

***Note:** Please leave the hex bolt's head exposed for removal and tightening.



- 3 To complete seating the masonry anchor, firmly tighten the hex bolt preferably using a combination or socket wrench.

***Note:** Do not over-tighten the bolt or it will strip the threading.



- 4 Once seated, unscrew and remove the hex bolt from the bolt sleeve of the masonry anchor firmly embedded in the wall.



- 5 Position the wall bracket over the holes. Use a level to ensure that the installation will be properly levelled. Re-insert the hex bolts through the brackets into the masonry anchor sleeve. Firmly tighten the hex bolts until they hold the brackets snugly against the wall. (Once again, do not over tighten or it will strip the threads.)



Our team prides itself on quality in product and service.

Should you have any concerns or questions, do not hesitate to reach us at service@advaning.com