

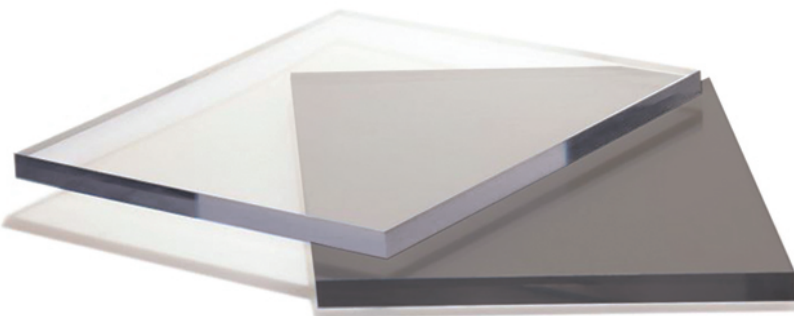


Advaning is a leading awning manufacturer specializing in crafting top-quality, user friendly awnings and related products. Our polycarbonate line of products are designed to enhance any exterior with their unintrusive modern design. Incorporating only the highest-quality Bayer virgin raw, virtually unbreakable, solid polycarbonate sheets. In addition to their superior strength, our polycarbonate is infused with an 80+UV protectant that helps keep your doors and window shades from harmful sun damaging and fading UV light.

Advaning's polycarbonate awnings are a DIY-friendly, durable solution for your outdoor space. Constructed with high-quality components, our affordable awnings provide excellent value for the price. Whether you're a homeowner or involved in a commercial project, Advaning is here to support you every step of the way. Trust in our commitment to assist you in creating the perfect outdoor environment.

SOLID POLYCARBONATE ADVANTAGE

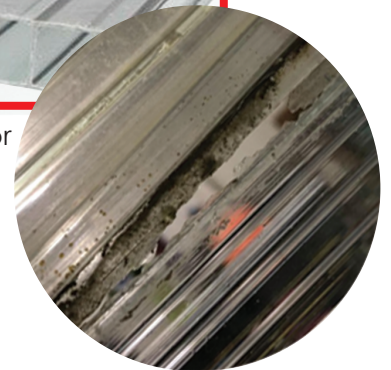
Be weary of cheap imitations with hollow polycarbonate panels. These lesser products collect condensation resulting in mold and mildew build-up which is impossible to clean.

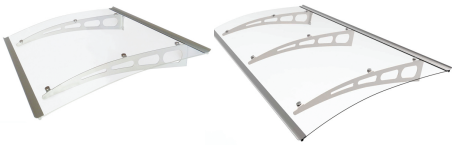
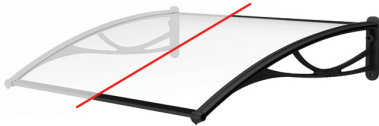
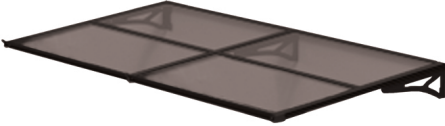





Hollow polycarbonate sheet panels



Actual photo of competitor product 1-year of use



Specs.	PA SERIES				PN SERIES		PS SERIES	
Profile								
Size Options	All polycarbonate awning are pre-cut, packed and ready to ship. All measurements provided in inches - for general reference only.							
Width (inch)	47	59	79	94	47	55	79	94
Depth (inch)	35.8				31.5		35.4	
Height (inch)	7.9				8.3		5.7	
Color Options	All polycarbonate awning series' offer color variations with either frame/brackets & polycarbonate sheet or both.							
Frame/Bracket	Silver (Metallic Powder Coat)				Black or White (Injection Mold)		Charcoal Gray (Powder Coat)	
Polycarbonate Options								
Series Polycarbonate Options	Clear Tinted Gray Frosted	Clear Tinted Gray		Clear		Tinted Gray		
Polycarbonate Thickness (mm)	3							
UV Protection	80+%							
Bracket Material	Solid Die Cut 1061-Grade Aluminum				Nylon with Fiberglass Reinforced Fibers		Solid Die Cut Galvanized Steel	
Bracket Qty	2	3		2		3		
Connectable Feature	No				Yes		Yes	
Assembly Hardware	Engineered Stainless Steel Bolt with Plastic Washers				Stainless Steel Screws			
Series' Model #	DA4735-PSS1A = 47"x35" / Clear / Silver DA4735-PSS2A = 47"x35" / Tinted Gray / Silver DA4735-PSS3A = 47"x35" / Frosted / Silver DA5935-PSS1A = 59"x35" / Clear / Silver DA5935-PSS2A = 59"x35" / Tinted Gray / Silver DA5935-PSS3A = 59"x35" / Frosted / Silver DA7935-PSS1A = 79"x35" / Clear / Silver DA7935-PSS2A = 79"x35" / Tinted Gray / Silver DA9435-PSS1A = 94"x35" / Clear / Silver DA9435-PSS2A = 94"x35" / Tinted Gray / Silver				DA4731-PBS1N = 47"x31" / Clear / Black DA4731-PWS1N = 47"x31" / Clear / White DA5531-PBS1N = 55"x31" / Clear / Black DA5935-PWS1N = 52"x31" / Clear / White		DA7935-PGS2A = 79"x35" / Tinted Gray / Ch. Gray DA9435-PGS2A = 94"x35" / Tinted Gray / Ch. Gray	
Front/Rear Bar/Gutters	6061-T3 Grade Aluminum							
Rubber Gaskets/Strips	EPDM Grade							
Installation Hardware	304-Grade Stainless Steel Lag Screws							
Optional Installation Hardware	Solid Masonry Expansion Bolts, Sold Separately Part#ZDA-WEB-R2							
Warranty	1-Year Limited Warranty							